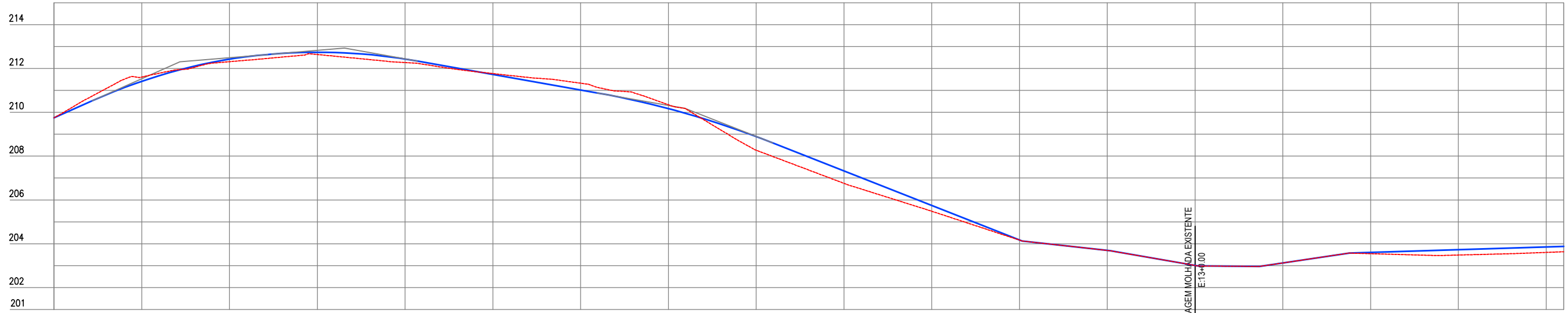
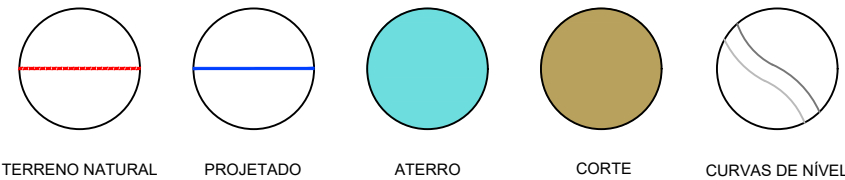


0 1000 2000

EIXO



Cota vermelha	Cota da terraplenagem	Cota do terreno	Estaca
0,000	209,747	209,747	0
-0,196	211,414	211,610	1
0,115	212,424	212,309	2
0,103	212,739	212,636	3
0,162	212,430	212,268	4
-0,038	211,727	211,766	5
-0,309	211,018	211,327	6
-0,177	210,167	210,344	7
0,622	208,690	208,268	8
0,566	207,323	206,757	9
0,263	205,749	205,485	10
0,008	204,174	204,166	11
0,000	203,696	203,696	12
0,000	203,010	203,010	13+PASSAGEM MOLHADA EXISTENTE
0,000	203,124	203,124	14
0,058	203,606	203,548	15
0,246	203,731	203,485	16
0,250	203,856	203,606	17
0,245	203,881	203,636	17



*Arthur Moreira Torquato*  
**JOTA BARROS PROJETOS**  
 Arthur Moreira Torquato  
 Engº Civil - CREA 539000 - CE

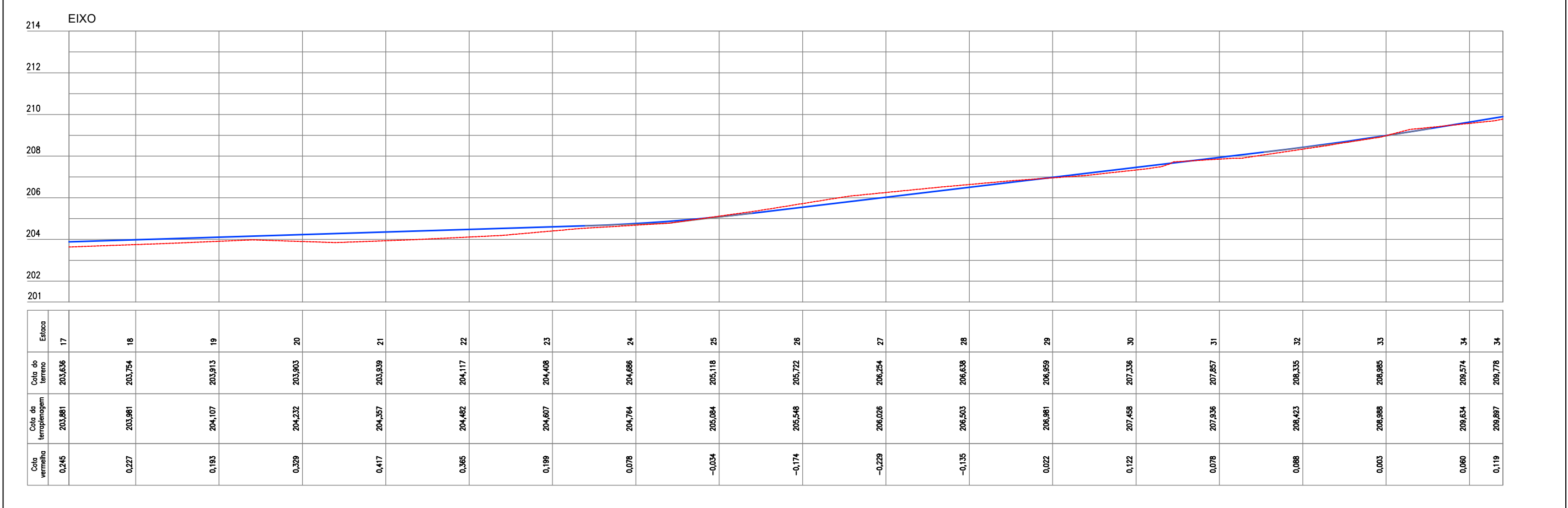
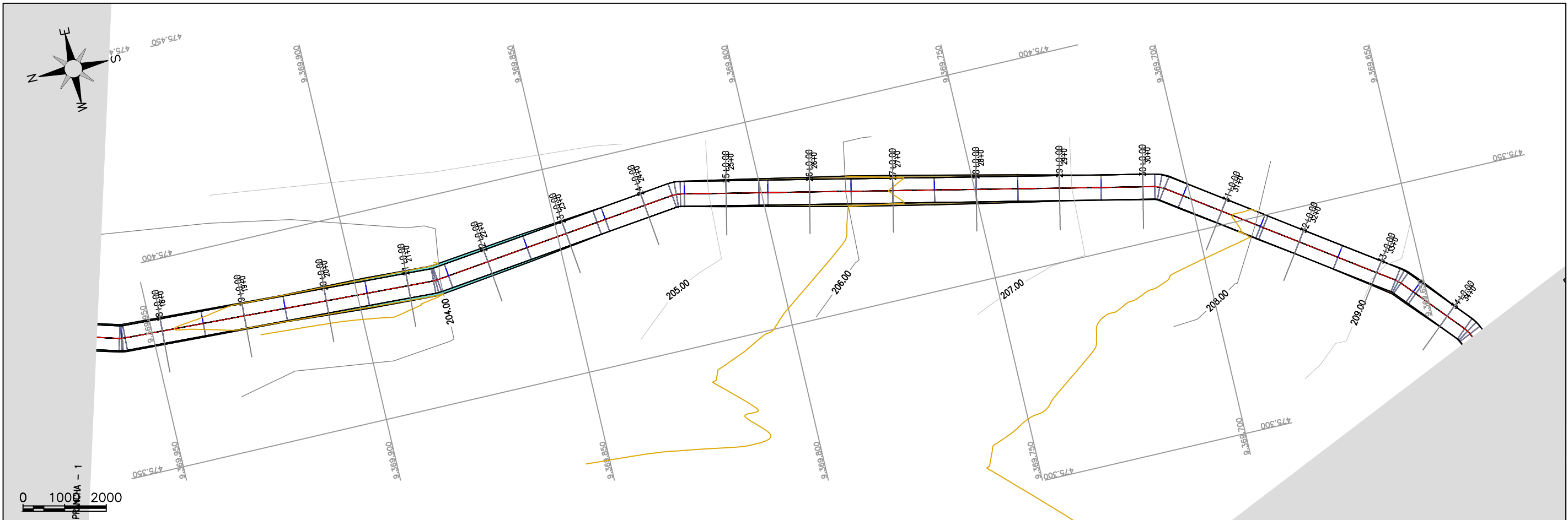


PREFEITURA MUNICIPAL DE MILHÃ  
 RECUPERAÇÃO DE ESTRADAS VICINAIS NO MUNICÍPIO DE MILHÃ-CE  
 PT 1087120-41

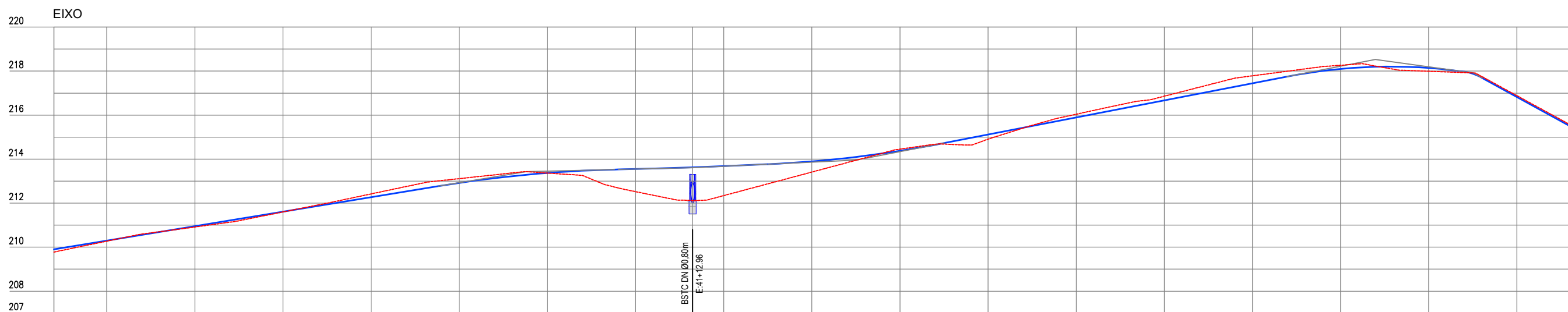
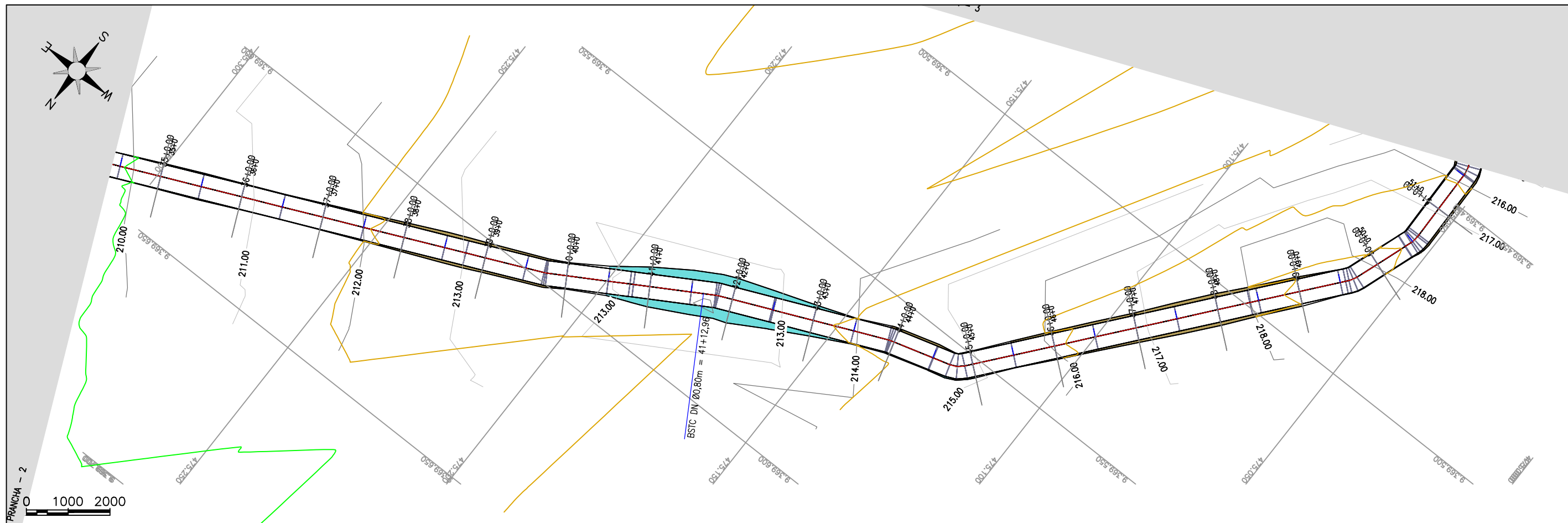
**ESTAQUEAMENTO E PERFIL LONGITUDINAL**

PROJETISTA: ENG. CIVIL ARTHUR MOREIRA TORQUATO - CREA 53.900D-CE  
 ARQUIVO: AGUA BOA - GEO.DWG

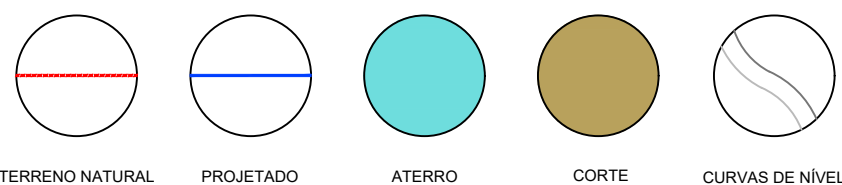
PRANCHA:  
**1 / 06**  
 ESCALA:  
**1/1000**




<p>TERRENO NATURAL    PROJETADO    ATERRO    CORTE    CURVAS DE NÍVEL</p>	<p>JOTA BARROS PROJETOS Arthur Moreira Torquato Engº Civil - CREA 539000 - CE</p>	<p>JOTA BARROS PROJETOS</p>	<b>PREFEITURA MUNICIPAL DE MILHÃ</b> <b>RECUPERAÇÃO DE ESTRADAS VICINAIS NO MUNICÍPIO DE MILHÃ-CE</b> <b>PT 1087120-41</b>		PRANCHA:
			<b>ESTAQUEAMENTO E PERFIL LONGITUDINAL</b>		<b>2 / 06</b>
			PROJETISTA:	ENG. CIVIL ARTHUR MOREIRA TORQUATO - CREA 53.900D-CE	ESCALA:
			ARQUIVO:	AGUA BOA - GEO.DWG	<b>1/1000</b>



Estaca	34	35	36	37	38	39	40	41	41+12,96	42	43	44	45	46	47	48	49	50	51	51
Cota do Terreno	209,778	210,273	210,917	211,601	212,420	213,114	213,367	212,523	212,108	212,343	213,412	214,455	214,911	216,041	216,861	217,787	218,266	217,983	216,885	215,422
Cota da Intersplengem	209,897	210,293	210,652	211,611	212,270	212,921	213,372	213,551	213,631	213,683	213,688	214,376	215,115	215,891	216,668	217,444	218,099	218,142	216,825	215,394
Cota Vermelha	0,119	0,020	0,035	0,010	-0,150	-0,193	0,005	1,028	1,522	1,340	0,486	-0,079	0,204	-0,150	-0,193	-0,342	-0,167	0,150	-0,080	-0,028



  
**JOTA BARROS PROJETOS**  
 Arthur Moreira Torquato  
 Engº Civil - CREA 53900D - CE

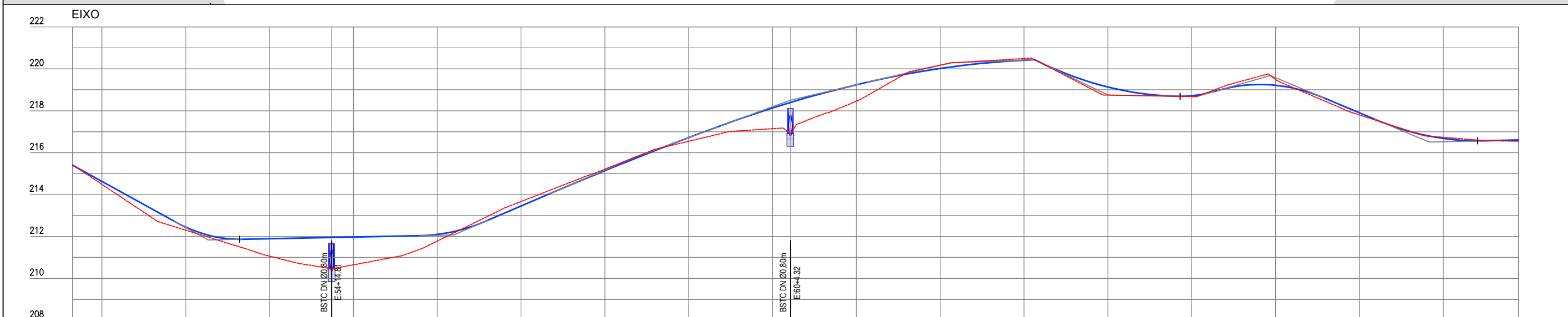
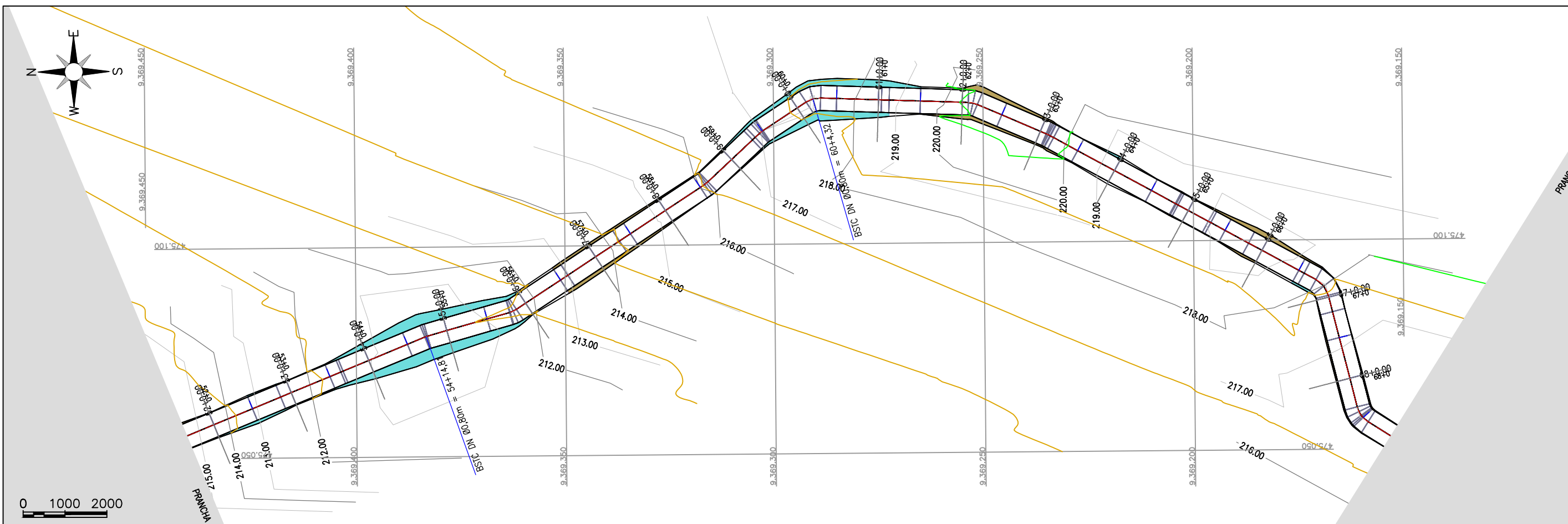


PREFEITURA MUNICIPAL DE MILHÃ  
 RECUPERAÇÃO DE ESTRADAS VICINAIS NO MUNICÍPIO DE MILHÃ-CE  
 PT 1087120-41

**ESTAQUEAMENTO E PERFIL LONGITUDINAL**

PROJETISTA: ENG. CIVIL ARTHUR MOREIRA TORQUATO - CREA 53.900D-CE  
 ARQUIVO: AGUA BOA - GEO.DWG

PRANCHA:  
**3 / 06**  
 ESCALA:  
**1/1000**



Estaca	51	52	53	54	55	56	57	58	59	60	61	62	63	64	65	66	67	68	68		
Coça do terreno	215,422	214,488	212,288	211,060	210,648	211,779	213,689	215,213	216,544	217,145	218,455	220,175	220,493	218,748	218,079	219,495	217,800	216,733	216,544		
Coça da terraplenagem	215,394	214,624	212,449	211,893	211,972	212,097	213,461	215,143	216,718	218,402	219,241	220,021	220,410	219,133	218,716	219,218	217,901	216,679	216,608		
Coça vermelha	-0,028	0,135	0,150	0,833	1,496	1,324	0,319	-0,218	-0,070	0,175	0,990	1,478	0,786	-0,154	-0,082	0,385	0,037	-0,277	0,101	-0,054	0,064

TERRENO NATURAL

PROJETADO

ATERRO

CORTE

CURVAS DE NÍVEL

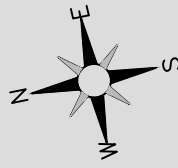
JOTA BARROS PROJETOS  
Arthur Moreira Torquato  
Engº Civil - CREA 539000 - CE

JOTA BARROS  
PROJETOS

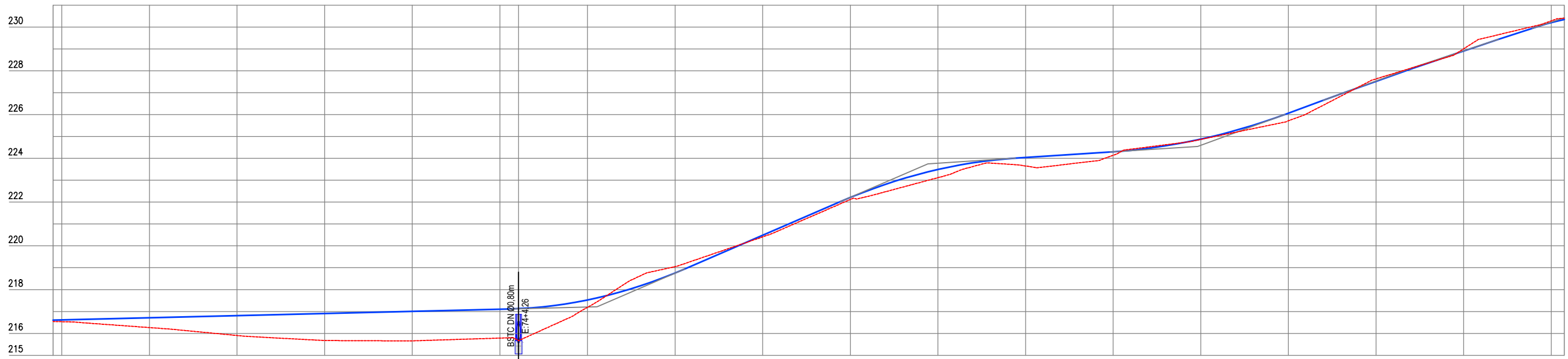
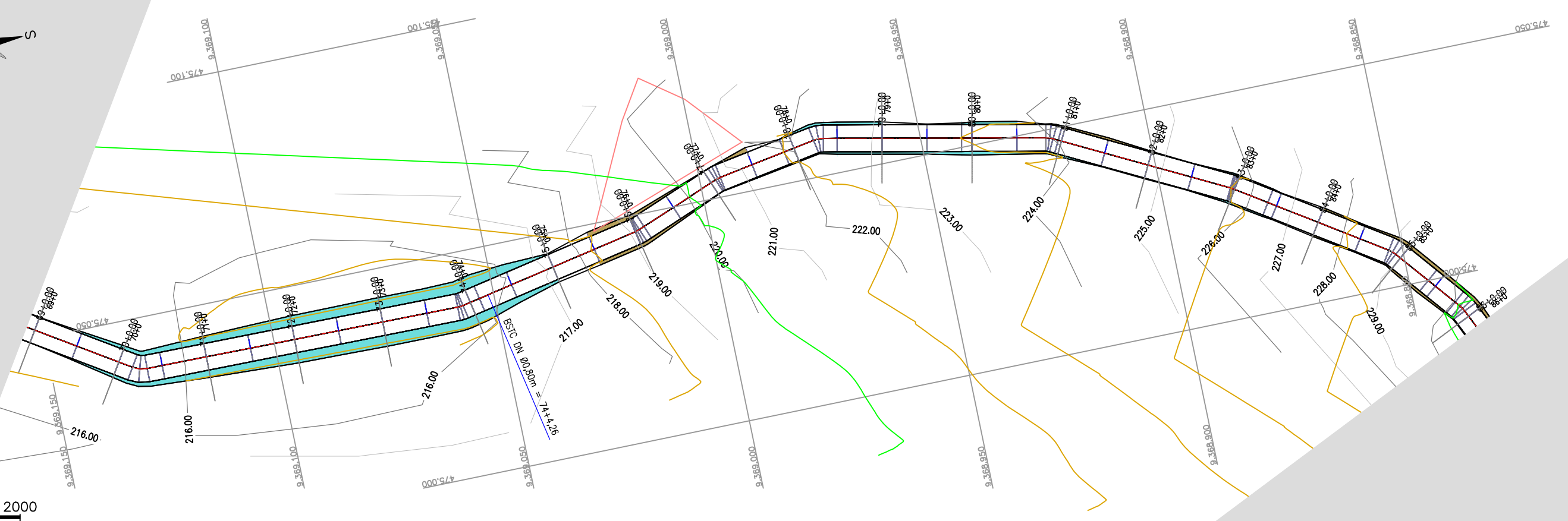
PREFEITURA MUNICIPAL DE MILHÃ  
RECUPERAÇÃO DE ESTRADAS VICINAIS NO MUNICÍPIO DE MILHÃ-CE  
PT 1087120-41  
**ESTAQUEAMENTO E PERFIL LONGITUDINAL**

PROJETISTA: ENG. CIVIL ARTHUR MOREIRA TORQUATO - CREA 53.900D-CE  
ARQUIVO: AGUA BOA - GEO.DWG

PRANCHA:  
**4 / 06**  
ESCALA:  
1/1000



0 1000 2000



Estaca	08	09	70	71	72	73	74	75	76	77	78	79	80	81	82	83	84	85	86
Cota da terreno	216,544	216,535	216,266	215,905	215,674	215,659	215,785	217,191	219,050	220,410	222,119	223,116	223,651	224,142	224,864	225,712	227,630	229,000	230,277
Cota da terraplenagem	216,608	216,617	216,715	216,813	216,911	217,009	217,107	217,529	218,761	220,487	222,212	223,489	224,036	224,294	224,877	226,064	227,518	228,903	230,198
Cota vertice	0,064	0,082	0,449	0,909	1,237	1,350	1,322	0,338	-0,289	0,076	0,093	0,373	0,385	0,153	0,012	0,351	-0,112	-0,097	-0,078

TERRENO NATURAL	PROJETADO	ATERRO	CORTE	CURVAS DE NÍVEL

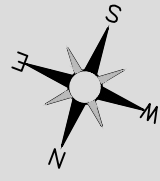
JOTA BARROS PROJETOS  
 Arthur Moreira Torquato  
 Engº Civil - CREA 53900D - CE



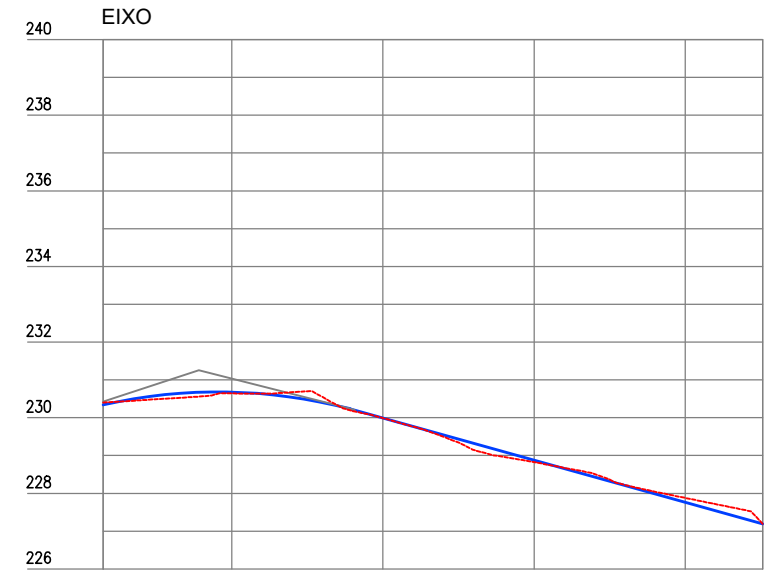
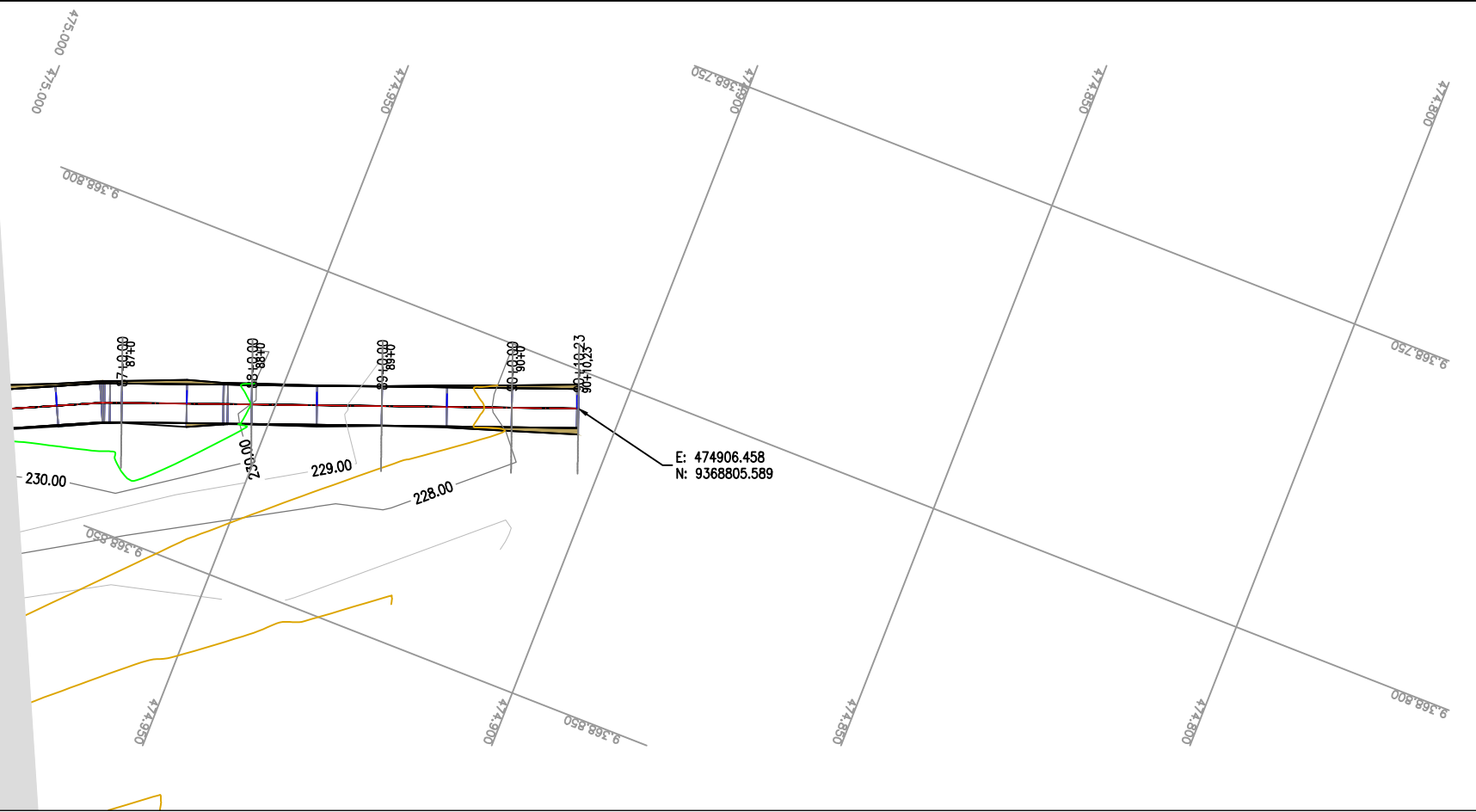
PREFEITURA MUNICIPAL DE MILHÃ  
 RECUPERAÇÃO DE ESTRADAS VICINAIS NO MUNICÍPIO DE MILHÃ-CE  
 PT 1087120-41  
**ESTAQUEAMENTO E PERFIL LONGITUDINAL**

PROJETISTA:	ENG. CIVIL ARTHUR MOREIRA TORQUATO - CREA 53.900D-CE
ARQUIVO:	AGUA BOA - GEO.DWG

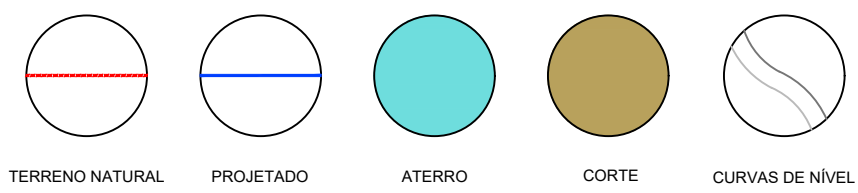
PRANCHA:  
**5 / 06**  
 ESCALA:  
 1/1000



0 1000 2000



Estaca	86	87	88	89	90	90
Cota do terreno	230,399	230,642	229,989	228,824	227,878	227,191
Cota da terraplenagem	230,345	230,677	229,995	228,878	227,762	227,191
Cota vermelha	-0,054	0,035	0,006	0,054	-0,116	0,000



*Arthur Moreira Torquato*  
**JOTA BARROS PROJETOS**  
 Arthur Moreira Torquato  
 Engº Civil - CREA 53900D - CE



PREFEITURA MUNICIPAL DE MILHÃ  
 RECUPERAÇÃO DE ESTRADAS VICINAIS NO MUNICÍPIO DE MILHÃ-CE  
 PT 1087120-41  
**ESTAQUEAMENTO E PERFIL LONGITUDINAL**  
 PROJETA: ENG. CIVIL ARTHUR MOREIRA TORQUATO - CREA 53.900D-CE  
 ARQUIVO: AGUA BOA - GEO.DWG

PRANCHA:  
**6 / 06**  
 ESCALA:  
 1/1000